

RFM Series 24 Cabinets

R. F. Mote Series 24 Kitted Cabinets include: 2 lockable doors, 2 side panels, mounting rails, levelling feet, top cover plates, and hardware package. Ganging version ships without side panels.



Series 24 Universal Server Cabinet – Kitted

Part number	W	D	H	#of U's
RFM-244890-US-19	24.00"	48.150"	90.00"	48U
RFM-244883-US-19	24.00"	48.150"	83.00"	44U
RFM-244290-US-19	24.00"	42.150"	90.00"	48U
RFM-244283-US-19	24.00"	42.150"	83.00"	44U
RFM-244272-US-19	24.00"	42.150"	72.00"	38U
RFM-244259-US-19	24.00"	42.150"	59.00"	30U
RFM-244235-US-19	24.00"	42.150"	35.00"	17U
RFM-243690-US-19	24.00"	36.150"	90.00"	48U
RFM-243683-US-19	24.00"	36.150"	83.00"	44U
RFM-243672-US-19	24.00"	36.150"	72.00"	38U
RFM-243659-US-19	24.00"	36.150"	59.00"	30U
RFM-243635-US-19	24.00"	36.150"	35.00"	17U
RFM-243090-US-19	24.00"	30.150"	90.00"	48U
RFM-243083-US-19	24.00"	30.150"	83.00"	44U
RFM-243072-US-19	24.00"	30.150"	72.00"	38U
RFM-243059-US-19	24.00"	30.150"	59.00"	30U
RFM-243035-US-19	24.00"	30.150"	35.00"	17U
RFM-242483-US-19	24.00"	24.150"	83.00"	44U

Series 24 Universal Patching Cabinet – Kitted

Part number	W	D	H	#of U's
RFM-244890-U-19	24.00"	48.150"	90.00"	48U
RFM-244883-U-19	24.00"	48.150"	83.00"	44U
RFM-244290-U-19	24.00"	42.150"	90.00"	48U
RFM-244283-U-19	24.00"	42.150"	83.00"	44U
RFM-244272-U-19	24.00"	42.150"	72.00"	38U
RFM-244259-U-19	24.00"	42.150"	59.00"	30U
RFM-244235-U-19	24.00"	42.150"	35.00"	17U
RFM-243690-U-19	24.00"	36.150"	90.00"	48U
RFM-243683-U-19	24.00"	36.150"	83.00"	44U
RFM-243672-U-19	24.00"	36.150"	72.00"	38U
RFM-243659-U-19	24.00"	36.150"	59.00"	30U
RFM-243635-U-19	24.00"	36.150"	35.00"	17U
RFM-243090-U-19	24.00"	30.150"	90.00"	48U
RFM-243083-U-19	24.00"	30.150"	83.00"	44U
RFM-243072-U-19	24.00"	30.150"	72.00"	38U
RFM-243059-U-19	24.00"	30.150"	59.00"	30U
RFM-243035-U-19	24.00"	30.150"	35.00"	17U
RFM-242483-U-19	24.00"	24.150"	83.00"	44U

24" Wide cabinet frame

Part Number	W	D	H	# of U's
RFM-244890	24.00	48.150	90.00	48U
RFM-244883	24.00	48.150	83.00	44U
RFM-244290	24.00	42.150	90.00	48U
RFM-244283	24.00	42.150	83.00	44U
RFM-244272	24.00	42.150	72.00	38U
RFM-244259	24.00	42.150	59.00	30U
RFM-244235	24.00	42.150	35.00	17U
RFM-243690	24.00	36.150	90.00	48U
RFM-243683	24.00	36.150	83.00	44U
RFM-243672	24.00	36.150	72.00	38U
RFM-243659	24.00	36.150	59.00	30U
RFM-243635	24.00	36.150	35.00	17U
RFM-243090	24.00	30.150	90.00	48U
RFM-243083	24.00	30.150	83.00	44U
RFM-243072	24.00	30.150	72.00	38U
RFM-243059	24.00	30.150	59.00	30U
RFM-243035	24.00	30.150	35.00	17U
RFM-242483	24.00	24.150	83.00	44U

Standard Features Include:

- Perforated doors front & rear (lockable, lift off)
- Solid side panels (also available perforated)
- 2 Pair EIA Mounting Rails cage-nut style
- Hardware package (qty 24, cage-nuts & screws)
- Cable access in top and bottom of cabinet
- Heavy gauge steel, fully welded construction
- UL 2416 Listed
- UL Rated for up to 3000 LBS Static Load
- 4 grounding points
- Levelling feet
- Standard colour is textured black powdercoat
- Easy ganging capabilities
- Electronic and Combination lock options available

Standard Features Include:

- Doors are lockable and lift off (Smoked acrylic¹ in front, Louvered in rear)
- Solid side panels (also available perforated)
- 1 Pair EIA Mounting Rails tapped #10-32
- Hardware package (qty 24, #10-32 screws)
- Cable access in top and bottom of cabinet
- Heavy gauge steel, fully welded construction
- UL 2416 Listed
- UL Rated for up to 3000 LBS Static Load
- 4 grounding points
- Levelling feet
- Standard colour is textured black powdercoat
- Easy ganging capabilities
- Electronic and Combination lock options available

¹ Inserts are UL 94 Fire Rated

Standard Features Include:

- Heavy gauge steel, fully welded construction
- UL 2416 Listed
- UL Rated for up to 3000 LBS Static Load
- Cable access in top and bottom of cabinet
- Cable and fan access top cover plates
- 4 Grounding points
 - 2 in top (#10-32 x 1/2" stud)
 - 2 in base (1/4-20 x 1/2" stud)
- Levelling feet
- Standard colour is textured black powdercoat
- Easy ganging capabilities
- Custom colours and sizes available

Scan QR Code



for more info!

Scan QR Code



for more info!

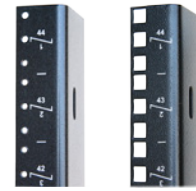
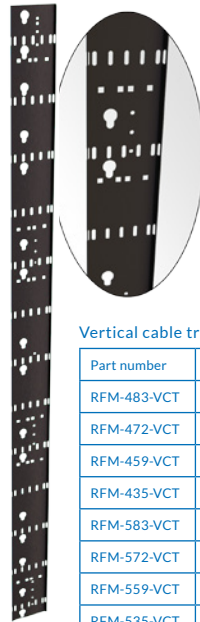
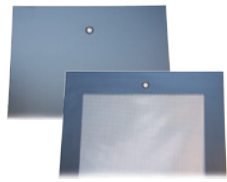
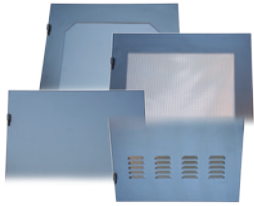
Scan QR Code



for more info!

RFM Series 24 Cabinets

Common Options



Cabinet Doors

Part number	Cab. height	Door type
RFM-2490-1	90"	Smoked acrylic
RFM-2483-1	83"	
RFM-2472-1	72"	
RFM-2459-1	59"	
RFM-2435-1	35"	
RFM-2490-1-P	90"	Perforated
RFM-2483-1-P	83"	
RFM-2472-1-P	72"	
RFM-2459-1-P	59"	
RFM-2435-1-P	35"	
RFM-2490-2	90"	Solid
RFM-2483-2	83"	
RFM-2472-2	72"	
RFM-2459-2	59"	
RFM-2435-2	35"	
RFM-2490-3	90"	Louvered
RFM-2483-3	83"	
RFM-2472-3	72"	
RFM-2459-3	59"	
RFM-2435-3	35"	

Cabinet Side Panels

Part number	Cab. height	Cab. depth
RFM-4890-4	90"	48" deep
RFM-4883-4	83"	
RFM-4290-4	90"	42" deep
RFM-4283-4	83"	
RFM-4272-4	72"	
RFM-4259-4	59"	
RFM-4235-4	35"	
RFM-3690-4	90"	36" deep
RFM-3683-4	83"	
RFM-3672-4	72"	
RFM-3659-4	59"	
RFM-3635-4	35"	
RFM-3090-4	90"	30" deep
RFM-3083-4	83"	
RFM-3072-4	72"	
RFM-3059-4	59"	
RFM-3035-4	35"	
RFM-2483-4	83"	24" deep

For perforated side, add suffix 'P' to part #



Vertical cable trough

Part number	H	W
RFM-483-VCT	76.88"	4.00"
RFM-472-VCT	65.88"	4.00"
RFM-459-VCT	52.75"	4.00"
RFM-435-VCT	28.75"	4.00"
RFM-583-VCT	76.88"	5.00"
RFM-572-VCT	65.88"	5.00"
RFM-559-VCT	52.75"	5.00"
RFM-535-VCT	28.75"	5.00"
RFM-683-VCT	76.88"	6.00"
RFM-672-VCT	65.88"	6.00"
RFM-659-VCT	52.75"	6.00"
RFM-635-VCT	28.75"	6.00"



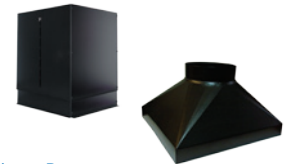
Mounting Rails / Angles

Part number		Cab. height	# of U's
Tapped #10-32	Cage-nut style		
RFM-1990-MA-24	RFM-1990-MA-24-SQ	90"	48U
RFM-1983-MA-24	RFM-1983-MA-24-SQ	83"	44U
RFM-1972-MA-24	RFM-1972-MA-24-SQ	72"	38U
RFM-1959-MA-24	RFM-1959-MA-24-SQ	59"	30U
RFM-1935-MA-24	RFM-1935-MA-24-SQ	35"	17U

High Density Vertical Cable Trough

Part number	Part description
RFM-683-VCT-HD	VCT-High Density*
RFM-DR-ADJ	attaches to VCT-HD

* Fits all RFM Series 83"H Cabinets



Grounding Bar – Horizontal & Vertical

Part number	Copper Bar
RFM-HGB-19	1" w x 3/16" Thick - Horiz.
RFM-GB-83	1" w x 3/16" Thick - Vert.
RFM-GB-72	1" w x 3/16" Thick - Vert.
RFM-GB-59	1" w x 3/16" Thick - Vert.
RFM-GB-35	1" w x 3/16" Thick - Vert.

Power Bars – Horizontal & Vertical

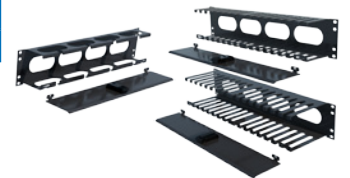
Part number	Mnt.	Rated
RFM-19-PBH-8	Horz	15A
RFM-19-PBH-20A	Horz	20A
RFM-19-PBH-20A	Horz	20A
RFM-48-PBV-18	Vert	15A
RFM-62-PBV-24	Vert	15A
RFM-62-PBV-20A-24	Vert	20A

Horizontal Cable Trough – Standard & High Density

Part number	L	H	W	Part description
RFM-HCT-24	30.00"	4.75"	5.88"	Trough - Standard
RFM-HCT-24-10	30.00"	4.75"	10.75"	Trough - HD
RFM-HCTE-C-5	n/a	4.56"	5.63"	Trough - End Cap
RFM-HCTE-C-10	n/a	4.56"	10.63"	Trough - HD end cap
RFM-HCT-J-0	1.625"	4.50"	n/a	Joiner for end cap

Exhaust Duct

Part number	description
RFM-EXFAN-DUCT	Adjustable Height
RFM-EXFAN-DUCT-8	Square to Round



4" & 10" Exhaust Fan assemblies

Part number	Airflow
RFM-2-FAN-CAB	220 CFM
RFM-4-FAN-CAB	440 CFM
RFM-10-FAN	525 CFM
RFM-10-FAN-2	1050 CFM

c/w Mounting Panel(s) for free standing cabinets



Jumper Kit

Part number	Cable
RFM-JK-60	6Awg, 60'L



Grounding Kit

Part number	Cable (4 pcs.)
RFM-GRD-KIT	10Awg, 16'L



Adj. Mount Depth - Fixed Position

Part number	Shelf depth	Overall adjustable mounting depth	Spacing
RFM-1726-CFS-4	26.00"	6.00" ~ 33.475"	1U
RFM-1719-CFS-4	19.00"	6.00" ~ 26.625"	1U
RFM-1716-CFS-4 (note: non-vented)	16.00"	6.00" ~ 23.625"	1U
RFM-2440-CFS-4		23.75" ~ 45.50"	1U

Adj. mount depth - Retractable

Part number	Shelf depth	Overall adjustable mounting depth	Spacing
RFM-1726-CRS-4-1U	26.00"	13.00" ~ 33.35"	1U

Horizontal Cable Management

Part number	Spacing
RFM-191D-HCM	1U
RFM-192D-HCM-TD	2U
RFM-194D-HCM-TD	4U
RFM-191D-HCM-D	1U
RFM-192D-HCM-D	2U
RFM-195D-HCM-D	5U
RFM-191D-HCM-F	1U
RFM-192D-HCM-F	2U
RFM-191D-HCM-FD	1U
RFM-192D-HCM-FD	2U
RFM-194D-HCM-FD	4U
RFM-192D-HCM-FHD	2U