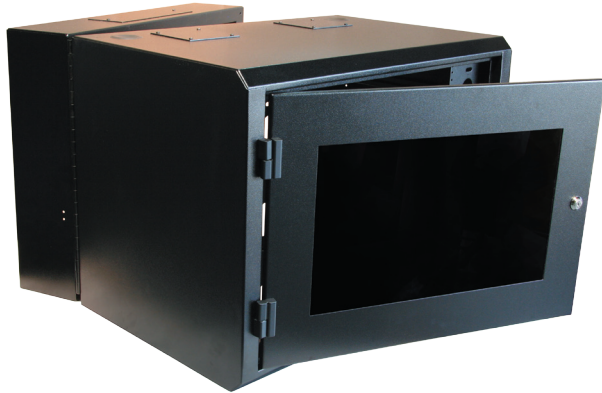


RFM Series Wall Mount Cabinets

Common Options



RFM-3022-WM (Wall Mount Cabinet) shown with optional 6" extender

R. F. Mote Series Wall Mount Cabinets standard configuration includes: lockable, smoked acrylic¹ front door and one pair of adjustable 19" EIA mounting rails.

¹ inserts are UL 94 Fire Rated



6" Cabinet Extender

Part number	Fits with...
RFM-3022-WM-6X	RFM-3022-WM-20
RFM-3036-WM-6X	RFM-3036-WM-20
RFM-3048-WM-6X	RFM-3048-WM-20



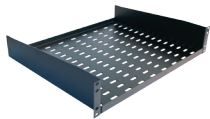
Mounting Rails

Part number	Fits with...
RFM-3022-WM-MA	RFM-3022-WM-20
RFM-3036-WM-MA	RFM-3036-WM-20
RFM-3048-WM-MA	RFM-3048-WM-20

Wall Mount Cabinet

Part number	Height	# of U's
RFM-3022-WM-20	22.25"	10U
RFM-3036-WM-20	36.00"	18U
RFM-3048-WM-20	48.00"	25U

Additional Options



Shelf – fixed series
100LB capacity

Part number	Depth	Spacing
RFM-1921-RFS	21"	2U
RFM-1915-RFS	15"	2U
RFM-1912-RFS	12"	2U
RFM-1909-RFS	9"	2U



Shelf – retractable series
100LB capacity

Part number	Depth	Spacing
RFM-1920-RRS	20"	2U



Shelf – retractable series
c/w pivoting keyboard shelf

Part number	Depth	Spacing
RFM-1922-RPKS	22"	3U



Vertical Cable Management

Part number	Fits with...
RFM-322-VCM	RFM-3022-WM-20
RFM-336-VCM	RFM-3036-WM-20
RFM-348-VCM	RFM-3048-WM-20



Horizontal Grounding Bar

Part number	Copper Bar
RFM-HGB-19	1" W x 3/16" Thick



Horizontal Power Bar

Part number	Rated
RFM-19-PBH-8	15A
RFM-19-PBHT	15A
RFM-19-PBH-20A	20A
RFM-19-PBHT-20A	20A



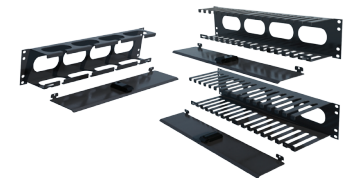
Folding keyboard tray
& mouse pad surface

Part Number	Depth
RFM-FKBA-19	8"



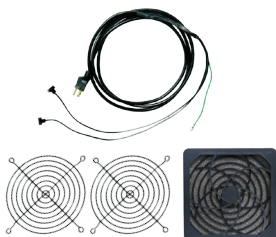
Horizontal Cable Manager
Zero 'U'

Part number	Depth
RFM-0UHCM-19	3.00"
RFM-0UHCM-19-5	5.00"



Horizontal Cable Management

Part number	Spacing
RFM-191D-HCM	1U
RFM-192D-HCM-TD	2U
RFM-194D-HCM-TD	4U
RFM-191D-HCM-D	1U
RFM-192D-HCM-D	2U
RFM-195D-HCM-D	5U
RFM-191D-HCM-F	1U
RFM-192D-HCM-F	2U
RFM-191D-HCM-FD	1U
RFM-192D-HCM-FD	2U
RFM-194D-HCM-FD	4U
RFM-192D-HCM-FHD	2U



4" Exhaust Fan assemblies

Part number	Airflow
RFM-1-FAN	110 CFM
RFM-2-FAN	220 CFM
RFM-FAN-FILTERS	n/a



Jumper Kit

Part number	Cable
RFM-JK-60	6Awg, 60"L



Grounding Kit

Part number	Cable (4 pcs.)
RFM-GRD-KIT	10Awg, 16"L



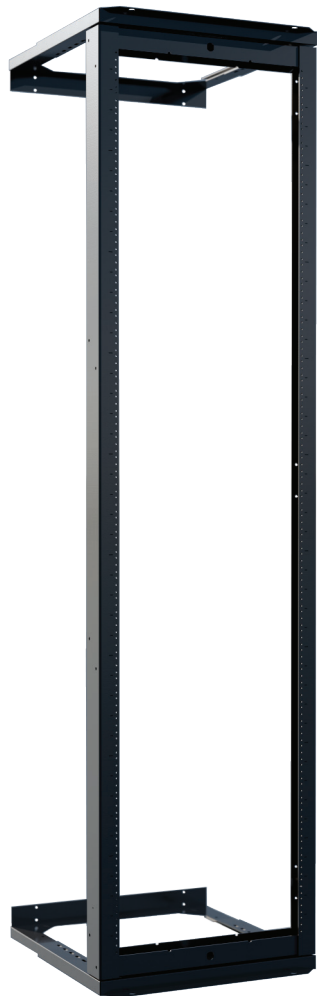
Gasket Kits

Part number	Fits with...
RFM-3022-WM-GASKET	22"H Cab.
RFM-3036-WM-GASKET	36"H Cab.
RFM-3048-WM-GASKET	48"H Cab.

RFM Series Wall Mount Racks & Brackets

Swing Out Wall Mount Racks

Swing out features allow for easy access to equipment.



Wall Mount, Adjustable, Swing Out Rack

Part number	# of U's
RFM-1944-RSO-ADJ	44U
RFM-1938-RSO-ADJ	38U

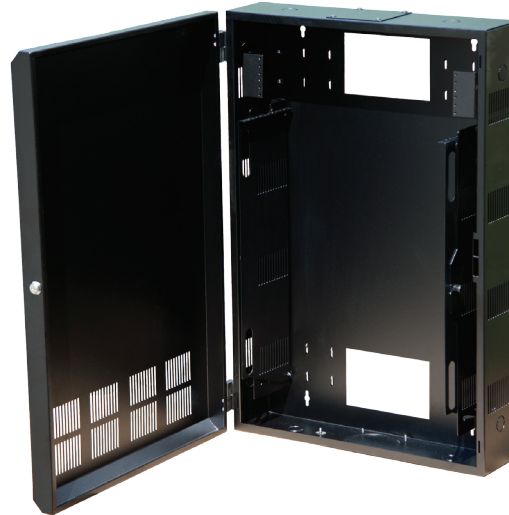


Wall Mount, Adjustable, Swing Out Rack

Part number	# of U's
RFM-1918-RWS-ADJ	18U

Low Profile Wall Mount Cabinet

R. F. Mote Wall Mount Racks, Brackets, and Low Profile Cabinets are available in various sizes and feature standard 19" EIA Mounting.



Wall Mount Cabinet, Low Profile

Part number	# of U's
RFM-2436-WM-LP-4U	4U
RFM-2436-WM-LP-6U	6U

RFM-2436-WM-LP shown with optional 2U mounting bracket

Additional Options:

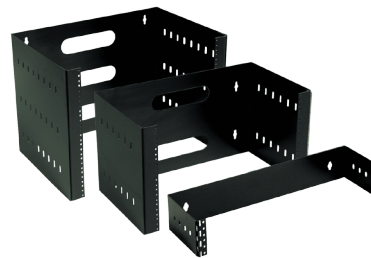
- 2u patch panel mounting brackets (Provides an additional 2U mounting)
- Fans for thermal management
- Gasket kit



2U Patch Panel Mounting Bracket

Part number	Fits...
RFM-LP-2U-BRKT	RFM-2436-WM-LP-4U RFM-2436-WM-LP-6U

Wall And Ceiling Mount Brackets



Wall Mount Bracket

	Part number	# of U's
Hinged	RFM-1902-HWMB	2U
Hinged	RFM-1906-HWMB	6U
Hinged	RFM-1909-HWMB	9U
Hinged	RFM-1911-HWMB-22	11U
Non-Hinged	RFM-1904-WMB	4U
Non-Hinged	RFM-1906-WMB	6U
Non-Hinged	RFM-1909-WMB	9U
Non-Hinged	RFM-1911-WMB-22	11U



Ceiling / Wall Mount Bracket

Part number	# of U's
RFM-CMPB-4U-12	4U
RFM-CMPB-4U-7	4U
RFM-CMPB-2U-4	2U

Fixed Mount Wall Mount Racks



Wall Mount, Adjustable, Fixed Rack

Part number	# of U's
RFM-1918-RWF-ADJ	18U