

RFM2 Cabinet System

The new RFM2 Cabinet is a reliable and economical cabinet solution that supports rack-mount server, storage and network equipment in data centers and enterprise facilities.

KEY FEATURES

- Cabinet solution adaptable to server, network and mixed-use applications
- Supports up to 1360 kg (3000 lb) of equipment
- Standard configuration includes perforated front and rear doors to support front-to-rear airflow
- Sized to match industry standards
- Thermal, power and cable management accessories available

USE WITH





- Air Dam Kit
- Full Height PDU Mounting Brackets
- Finger Style Cable Manager
- Cable Lashing Bracket
- Cage Nut Hardware

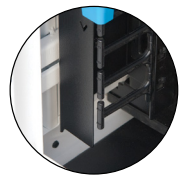
RELATED PRODUCTS

- Snap-In Filler Panels
- Rack-Mount Shelf
- eConnect® PDU



ADVANTAGES

- 
Optimal Airflow Management
 Design includes airflow management features and accessories, such as the Air Dam and 78% perforated doors.
- 
Cable Openings
 Large brush-covered cable openings in the top panel provide easy access for overhead cabling.
- 
High Static Load Rating
 Robust design supports up to 1360 kg (3000 lb) static load.
- 
Lockable Side Panels
 One-piece side panels provide quick access to equipment and cables.



SPECIFICATIONS

Description	Free-standing equipment cabinet provides front and rear support for 482.6 mm (19"W) EIA rack-mount equipment and shelves
Environment	For indoor use only, in environmentally controlled areas; do not use in harsh environments
Frame Includes	Welded steel four-post frame
	Equipment mounting rails, two pairs
	Factory installed grounding/bonding system
	Leveling feet and baying kit
	Solid top panel with four brush-covered cable access ports
	Perforated metal front and rear doors
	Solid metal side panels
	24 x 1/4-20 Cage Nuts and Screws
Load Capacity	1360 kg (3000 lb), stationary on leveling feet
Equipment Space	See Height, Width and Depth tables under ordering information
Material/Construction	Steel; welded frame, mounting rails screw to frame
Grounding/Bonding	Side panels and doors are electrically bonded to the cabinet frame; grounding locations are provided on the cabinet frame
Finish	Powder coat paint
Certifications	EIA-310 Compliant
	UL Listed 2416

R.F. MOTE

A division of Chatsworth Products
Your Technology Platform, Protected

R.F. Mote, Richmond Hill, Ontario
905-884-5250 • info@rfmote.com



Availability: Canada

United States

Simi Valley, CA
800-834-4969

Canada

Toronto, Ontario, Canada
+905-850-7770

chatsworth.com • techsupport@chatsworth.com

Europe

Buckinghamshire, UK
+441628 524834

Middle East & Africa

Dubai, UAE
+971-4-2602125

Doha, Qatar

+974-4-267422

Latin America

Mexico City
+52-55-5203-7525
Toll Free within Mexico
800-201-7592
chatsworth.com.co

Asia Pacific

Shanghai
+86 21 6880-0266
chatsworth.com.cn



CHATSWORTH
PRODUCTS

SPECIFICATIONS

Doors/Latches	Front door is 78% perforated metal
	Rear door is 78% perforated metal
	Swing handle latch with keyed lock
	Easy to remove; reversible to open from the right or left
Side Panels	Solid, one-piece panels (full-depth) with recessed locks located near the top, center of the panel
Top Panel	Solid top panel with four rectangular 100 mm x 225 mm (3.9"W x 8.9"D) brush-covered cable openings (one per corner)
Equipment Support	Two pairs of equipment mounting rails in the cabinet
	Adjustable depth; rails bolt into slotted frame depth members
	Marks on frame for easy vertical alignment
	44.45 mm (1.75"H) rack-mount unit U spacing, marked and numbered bottom-to-top on all rails
	Universal, 19"W, 15.9 mm – 15.9 mm – 12.7 mm (5/8" - 5/8" - 1/2") vertical hole spacing complies with EIA/ECA-310-E
	Square-punched mounting holes accept standard cage nuts

The RFM2 Cabinet System is an easy-to-use, computer and network equipment storage cabinet that complies with data center, computer room and premise network equipment room requirements. The RFM2 Cabinet is available in 16 popular frame sizes.

The RFM2 Cabinet supports up to 1360 kg (3000 lb) of equipment load. Equipment mounting rails are infinitely adjustable in depth, via the slotted depth members. Every cabinet includes a top panel, front and rear doors, side panels and leveling feet.

The RFM2 Cabinet is configured standard with perforated metal front and rear doors to support front-to-rear airflow in traditional hot aisle/cold aisle containment applications. The standard configuration features a solid top panel with four brush-covered openings for cable access (one per corner). The side panel is a one-piece panel.

Create a cabinet solution that fits your needs by selecting specific thermal, cable and power management accessories. Contact your local CPI Regional Sales Manager or R.F. Mote Technical Support @ 905-884-5250, for complete product details.

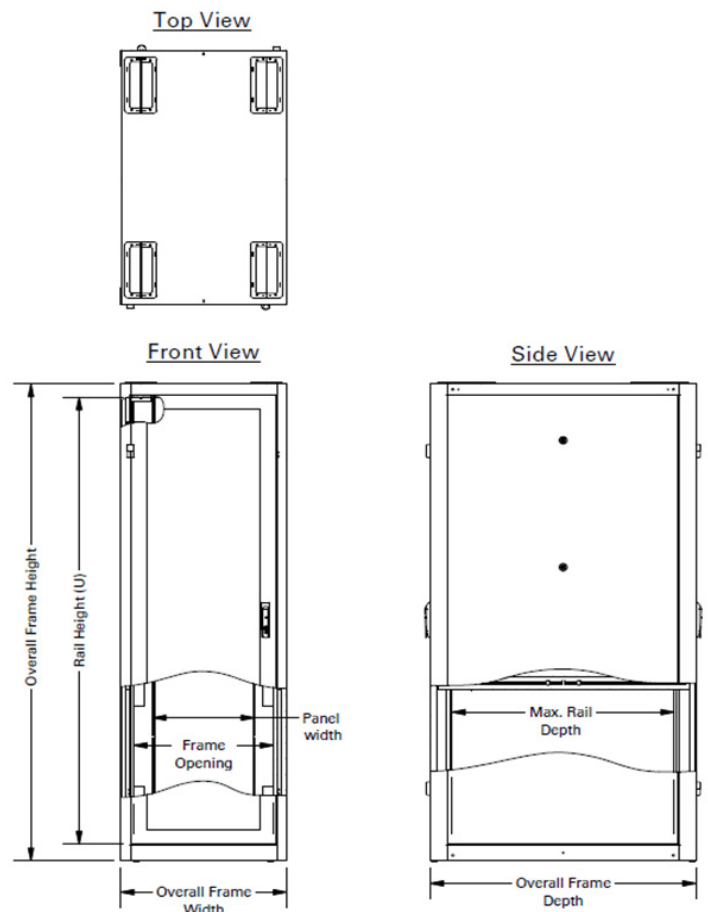
DIMENSION TABLES

Height Dimensions – mm (in)				
Rail Height	42U	45U	48U	52U
Overall Height, Frame Only	2032 (80.0)	2156 (84.9)	2290 (90.1)	2466 (79.1)
Overall Height, Leveling Feet included	2035 (80.2)	2159 (85.0)	2293 (90.3)	2171 (97.3)

Width Dimensions – mm (in)		
Nominal Width	24"	30"
Overall Width	610 (24)	762 (30)
Frame Opening, Front	491 (19.4)	644 (25.4)
Panel Width	482.6 (19"EIA)	482.6 (19"EIA)

Depth Dimensions – mm (in)		
Nominal Depth	42"	48"
Overall Depth with Doors	1071 (42.2)	1223 (48.2)
Maximum Rail to Rail Depth	1006 (39.6)	1159 (45.6)

DIMENSIONAL DRAWINGS



ORDERING INFORMATION

Use the part number table below to select a RFM2 Cabinet. Choose the Width (24" or 30"), Depth (42" or 48") and Height (42U, 45U, 48U or 52U).

Example Part Number: **RFM2-304845-W**

- 16 frame sizes to choose from—three heights, two widths, two depths.
- Includes a cabinet frame, two pairs of 482.6 mm (19"W) EIA square-punched equipment mounting rails, a perforated front door, a perforated rear door, swing handle latches, keyed locks, solid side panels, top panel with 4X brush cable entry, leveling feet and baying kit.
- Supports 1360 kg (3000 lb) static load on leveling feet. The leveling feet should be extended prior to adding equipment to the cabinet.
- Colour is Black or White.

42U Cabinets	Width	Depth	Height	Colour
RFM2-244242-B	24.00"	42.15"	42U	Black
RFM2-244242-W	24.00"	42.15"	42U	White
RFM2-304242-B	30.00"	42.15"	42U	Black
RFM2-304242-W	30.00"	42.15"	42U	White
RFM2-244842-B	24.00"	48.15"	42U	Black
RFM2-244842-W	24.00"	48.15"	42U	White
RFM2-304842-B	30.00"	48.15"	42U	Black
RFM2-304842-W	30.00"	48.15"	42U	White

45U Cabinets	Width	Depth	Height	Colour
RFM2-244245-B	24.00"	42.15"	45U	Black
RFM2-244245-W	24.00"	42.15"	45U	White
RFM2-304245-B	30.00"	42.15"	45U	Black
RFM2-304245-W	30.00"	42.15"	45U	White
RFM2-244845-B	24.00"	48.15"	45U	Black
RFM2-244845-W	24.00"	48.15"	45U	White
RFM2-304845-B	30.00"	48.15"	45U	Black
RFM2-304845-W	30.00"	48.15"	45U	White

48U Cabinets	Width	Depth	Height	Colour
RFM2-244248-B	24.00"	42.15"	48U	Black
RFM2-244248-W	24.00"	42.15"	48U	White
RFM2-304248-B	30.00"	42.15"	48U	Black
RFM2-304248-W	30.00"	42.15"	48U	White
RFM2-244848-B	24.00"	48.15"	48U	Black
RFM2-244848-W	24.00"	48.15"	48U	White
RFM2-304848-B	30.00"	48.15"	48U	Black
RFM2-304848-W	30.00"	48.15"	48U	White

52U Cabinets	Width	Depth	Height	Colour
RFM2-244252-B	24.00"	42.15"	52U	Black
RFM2-244252-W	24.00"	42.15"	52U	White
RFM2-304252-B	30.00"	42.15"	52U	Black
RFM2-304252-W	30.00"	42.15"	52U	White
RFM2-244852-B	24.00"	48.15"	52U	Black
RFM2-244852-W	24.00"	48.15"	52U	White
RFM2-304852-B	30.00"	48.15"	52U	Black
RFM2-304852-W	30.00"	48.15"	52U	White



CABLE MANAGEMENT ACCESSORIES

Keep network, KVM and power cables separated and organized using the following cable management accessories.



Air Dam Kit

The Air Dam Kit attaches to the front mounting rails, providing a complete seal around mounted equipment, ensuring complete airflow isolation and eliminating bypass airflow. The Air Dam Kit also provides seals above and below mounted equipment. Configure with cabinet or available separately as an accessory.

- Includes Equipment Mounting Rail Brush Kit
- Sold each
- Finish: Black

Part Number		Description
24"W	30"W	
RFM2-ADK-2442-B	RFM2-ADK-3042-B	For 42U Cabinets
RFM2-ADK-2445-B	RFM2-ADK-3045-B	For 45U Cabinets
RFM2-ADK-2448-B	RFM2-ADK-3048-B	For 48U Cabinets
RFM2-ADK-2452-B	RFM2-ADK-3052-B	For 52U Cabinets



Finger Cable Manager

The Finger Cable Manager attaches to the cabinet's frame, and provides vertical cable management with plastic T-shaped cable guides and openings that align with each U space in the cabinet to organize patch cords. The manager is for use in the 762 mm (30"W) cabinet and includes a cover that partially encloses cables. Fingers require a 146 mm (5.75") rail setback.

- Sold each
- Finish: Black

Part Number	Description
RFM2-542-VCM-F-B	Finger Style Cable Manager, 42U Cabinets
RFM2-545-VCM-F-B	Finger Style Cable Manager, 45U Cabinets
RFM2-548-VCM-F-B	Finger Style Cable Manager, 48U Cabinets
RFM2-552-VCM-F-B	Finger Style Cable Manager, 52U Cabinets



Combination PDU Mounting Bracket / Vertical Cable Managers

The Combination PDU / VCM Bracket attaches to the cabinet frame, and provides attachment points for one (Single Wide) or two (Double Wide) vertical PDUs or power strips for cabinets, and multiple tie points for power cables. Tool-less PDU attachment points are located 1645 mm and 1556 mm (64.75" and 61.25") apart. The brackets support either one or two 56 mm (2.2"W) or narrower PDUs. The Double Wide Bracket is 140 mm (5.5") wide and the Single Wide Bracket is 76 mm (3.0") wide.

- Sold each
- Finish: Black

Part Number	Description
RFM2-PCM-S-B	PDU Cable Manager, Single-Wide, Black
RFM2-PCM-D-B	PDU Cable Manager, Double-Wide, Black



Front-to-Rear Cable Manager

Front-to-Rear Cable Manager attaches to the cabinet frame wherever there are cable openings, creating a cable pathway between front and rear rails.

- Adjustable to match various front-to-rear rail depths ranging from 457 mm (18") to 787 mm (31")
- For use in 762 mm (30") wide cabinets only
- Sold each
- Finish: Black

Part Number	Description
RFM2-FTB-1831-B	Front-to-Rear Cable Manager, Black
RFM2-ADBK	Brush Kit, for 30"W Cabinets, Pack of 8, Black
RFM-CN	Cage Nut Hardware Kits, 24 Pack, Zinc



Equipment Mounting Rail Brush Kit

Set of (8) brush covers that conceal cable openings in the equipment mounting rails to block airflow around equipment. Configure with cabinet or available separately as an accessory.

- Allows for quick cable installation through mounting rails while maintaining a seal
- Suited for high cable density applications
- Split bezel design does not capture cables and allows for retrofitting around existing cables
- Not compatible with 610 mm (24") wide cabinets
- UL 94-V0 flammability rating
- Material: Plastic housing, nylon brushes

R.F. MOTE

A division of Chatsworth Products

Your Technology Platform, Protected

R.F. Mote, Richmond Hill, Ontario
905-884-5250 • info@rfmote.com



CHATSWORTH PRODUCTS

While every effort has been made to ensure the accuracy of all information, CPI does not accept liability for any errors or omissions and reserves the right to change information and descriptions of listed services and products. ©2023 Chatsworth Products, Inc. All rights reserved. Chatsworth Products, Click-Nut, CPI, CPI Passive Cooling, CUBE-IT, Secure Array, eConnect, Evolution, GlobalFrame, MegaFrame, QuadraRack, RMR, Saf- T-Grip, SeismicFrame, SlimFrame, TeraFrame, Motive and Velocity are federally registered trademarks of Chatsworth Products. EuroFrame, H-Plane, Hi-Bar, In-Plane, M-Frame, NetPoint, Oberon, Simply Efficient, Skybar, Wi-Tile and ZetaFrame are trademarks of Chatsworth Products. All other trademarks belong to their respective companies. Rev. 10/23 MKT-60020-785.en-CA