

# General Assembly Instructions for V3 Cage Sliding Door

**The following assembly installation instructions are for a single sliding cage door. Size of the door may vary but installation remains the same. Specific layout information for door placement will be provided in addition to these instructions. Item numbers referenced in these instructions apply only to this parts list. Please refer to the parts list and drawings sent with your containment unit for actual layout and part numbers.**

## **Tools Required:**

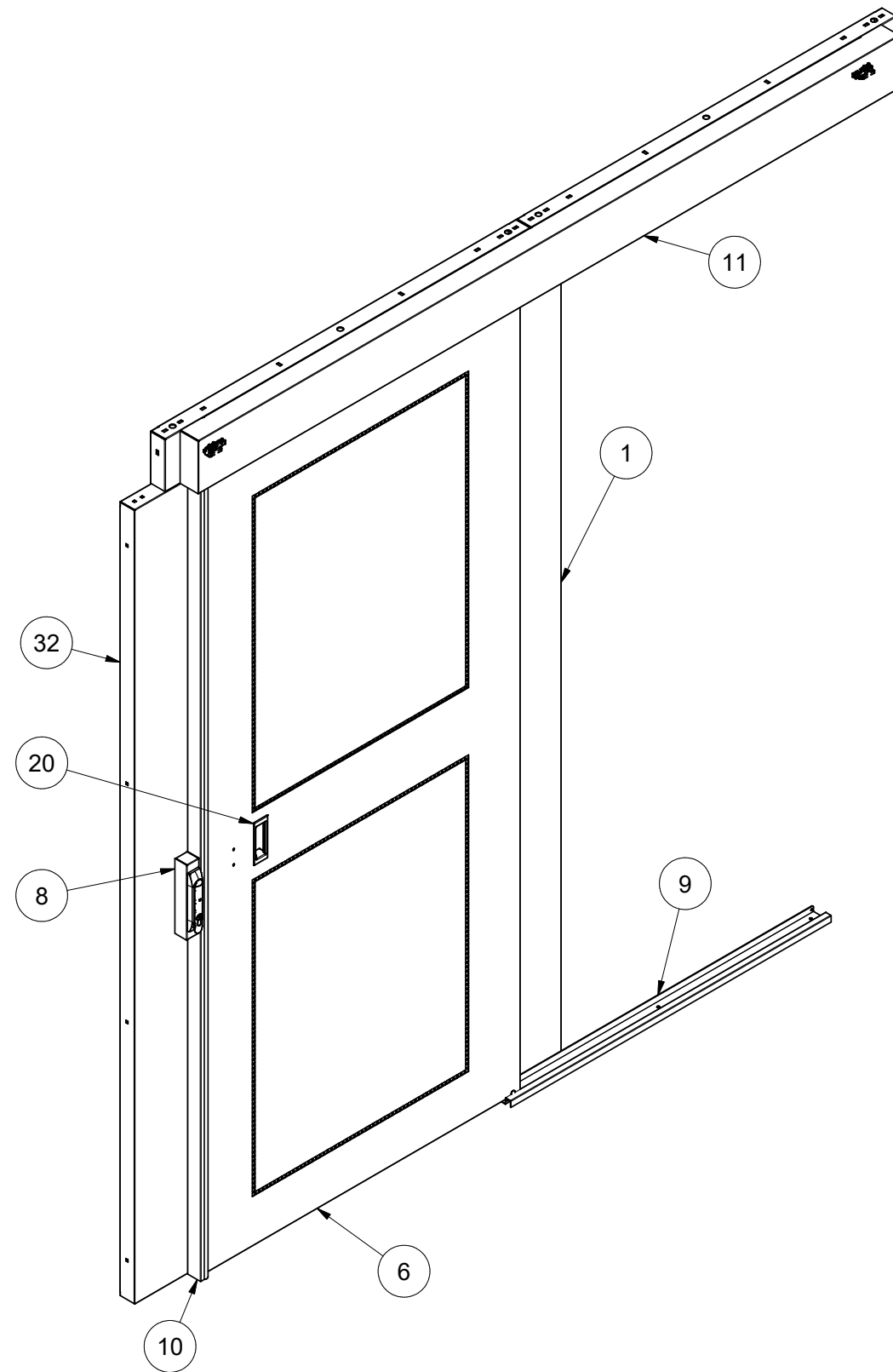
- 7/16" Deep style socket or wrench
- 3/8" Deep style socket or wrench
- #2 Phillips head screwdriver
- #2 Robertson head screwdriver
- #3 Robertson head screwdriver
- 1/2" wrench
- Level
- Tape Measure (recommended)
- Chalk Line (recommended)

## **Tips For Installation:**

- Review all drawings and instructions first
- Unpackage items from the box and group accordingly. Ensure all parts are accounted for (refer to parts list of the accompanied layout drawings as reference)
  - Note: Some items may already be pre-assembled
- Begin installation (if possible) on the floor or area around the cage. Ensure the cage wall the door will be attached to is in place and tightly fastened.
- Have temporary supports or multiple personnel available prior to installation as the door may be unstable at times during installation
- Ensure wall columns and panels are securely fastened and level prior to door install. Failure to do so may result in poor door function
- Check all measurements prior to install and after with a tape measure. If required to keep wall straight, use a chalk line as a straight line guide

The information contained herewithin is proprietary and confidential to **R.F.MOTE LTD.** It may not be reproduced or further disseminated, in whole or in part, without prior written consent from **R.F.MOTE LTD.**





PARTS LIST		
ITEM	QTY	PART NUMBER
1	1	RFM-CC-SD-xxxx-EL-POST
2	1	RFM-CC-SD-xxxx-xx-V3-DOOR
3	2	RFM-CC-SD-3890-STIFF-V3
4	6	8-32 x .375 Pan Head Tapping Screw
5	2	FH-032-12 ZI
6	1	RFM-CC-SD-3890-DOOR-V3
7	4	YPF-0060-B PLASTIC BUTTON
8	1	RFM-CC-SD-xxxx-E-LOCK BOX-V3
9	1	RFM-CC-SD-xxxx-BOTTOM TRACK
10	1	RFM-CC-SD-xxxx-STOP-V3
11	1	RFM-CC-SD-xxxx-VALANCE
12	1	E5-6200 Hooked Cam
13	2	940-82-108 Roller Wheels
14	1	RFM-CC-SD-xxxx-TRACK BRK
15	2	RFM-CC-SD-xxxx-J-6-48
16	5	5/16 Flat Washer
17	6	1/4-20 x 3/4 Round Comb. MS
18	1	RFM-CC-SD-xxxx-WIRE COVER-EL-V3
19	11	1/4-20 Keps Nut
20	2	P1-30-101-11 Pull Handle
21	8	10-32 x 1/2 PAN QUAD MS
22	12	10-32 KEPS NUT
23	1	TRACK X 87
24	5	1/4-20 x 3/4 Carriage Bolt
25	1	Swing Handle Lock
26	2	230-139 Nylon Shoulder Washer
27	1	RFM-CC-SD- FILLER 12GA
28	1	RFM-CC-SD-FILLER 16GA
29	1	RFM-CC-SD-AlignBrkt
30	1	RFM-CC-SD-LOCK SLIDE-V3-LH_MIR
31	2	10-32 Nylock Nut
32	1	RFM-CC-SD-3890-POST1-RH-V3

**Notes:**

1. Door (Item 6) will be shipped pre-assembled from Factory as ordered in either RH or LH version.
2. Mid wall configuration shown:
  - For Corner configuration replace Post (item 32) with Corner Post.
  - For End configuration replace Post (item 32) with Flush Column.

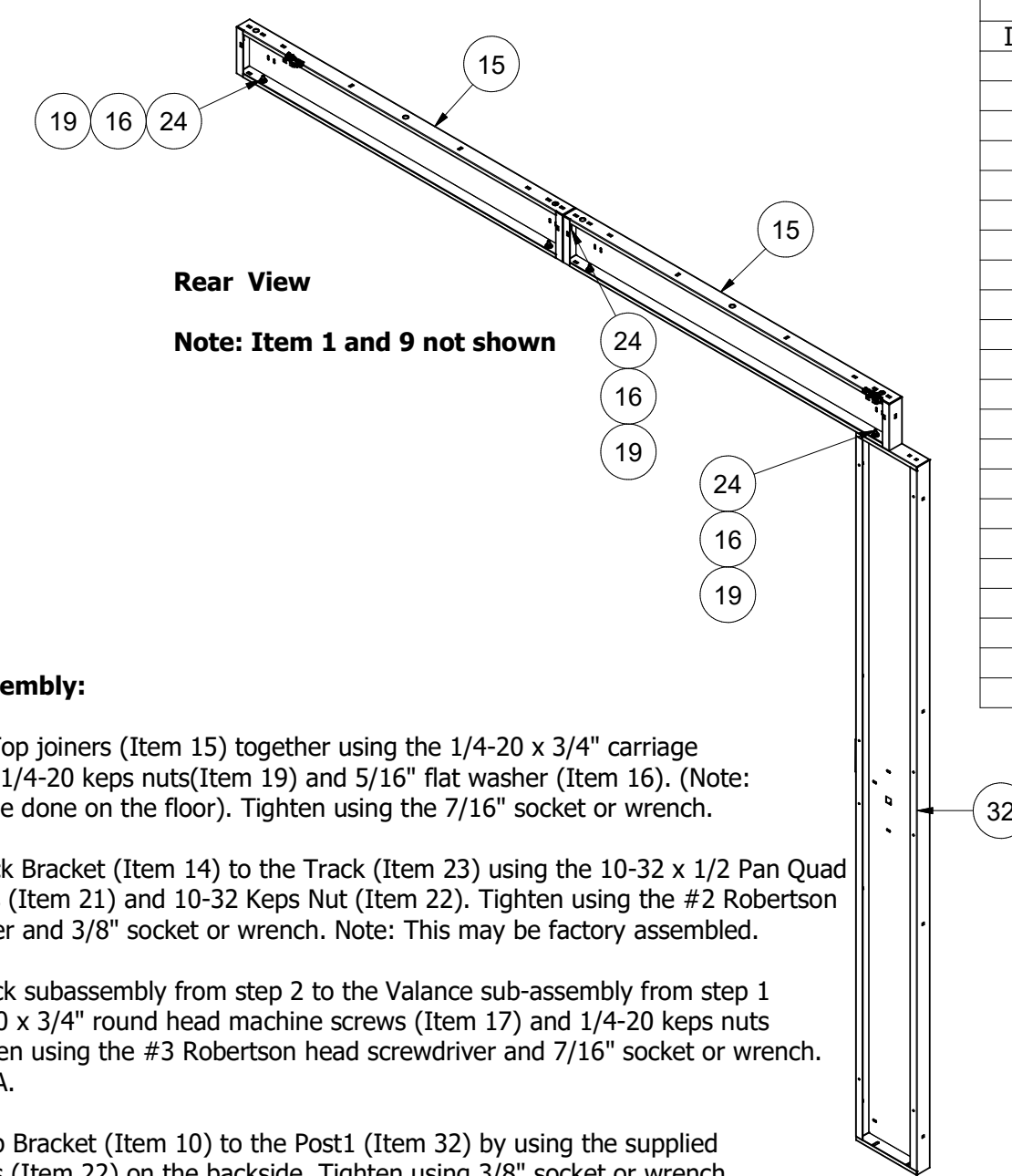
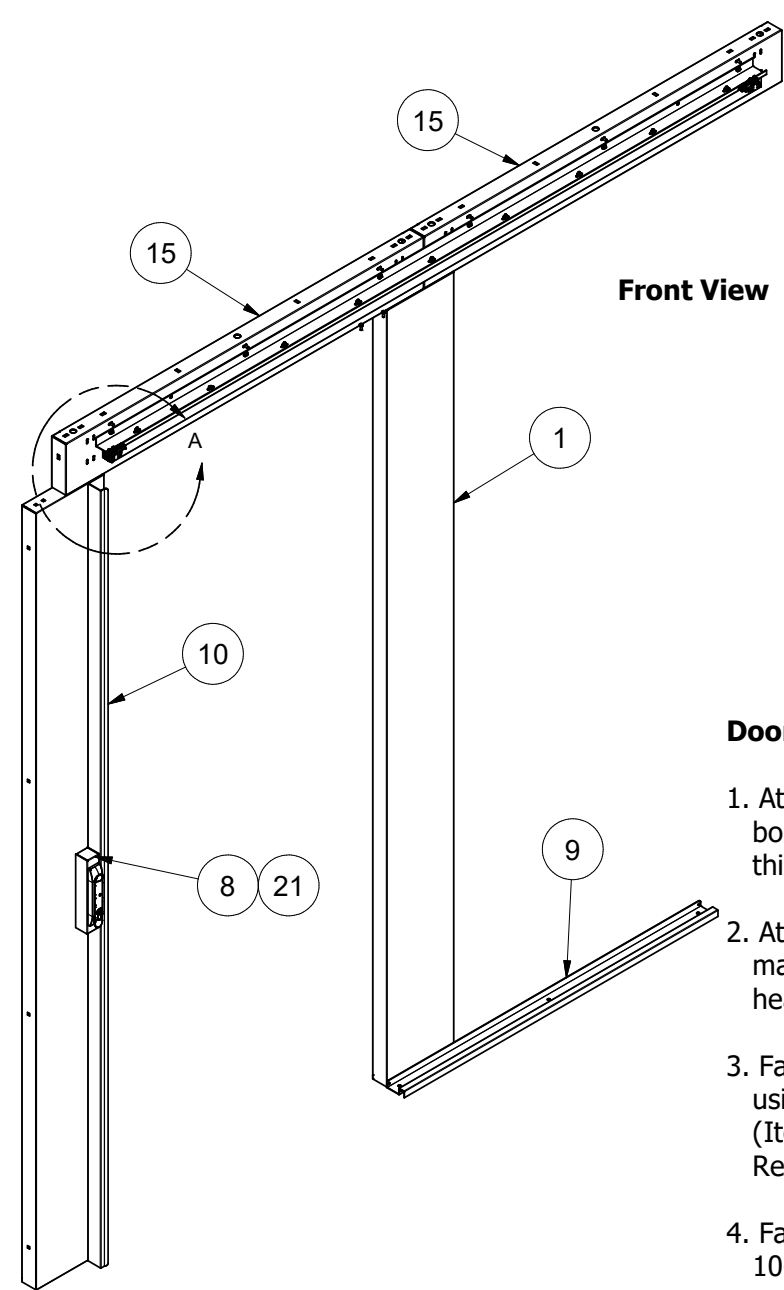
**R.F.MOTE LTD**  
ENGINEERED SYSTEMS

214 NEWKIRK RD.  
RICHMOND HILL, ONTARIO  
L4C 3G7  
PHONE (905) 884-5250  
FAX (905) 737-5188

PROJECT			
PART NUMBER			
<b>RFM-CC-SD-3890-__-V3.IAM</b>			
DATE	SCALE	WEIGHT	REV
16-Apr-19	.15: 1	N/A	00
AUTHOR		<b>SHEET 2 OF 6</b>	
Voula			

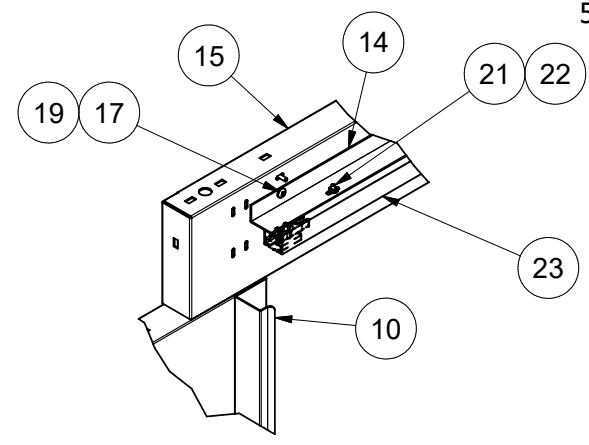
The information contained herewithin is proprietary and confidential to R.F.MOTE LTD. It may not be reproduced or further disseminated, in whole or in part, without prior written consent from R.F.MOTE LTD.

PARTS LIST		
ITEM	QTY	PART NUMBER
1	1	RFM-CC-SD-xxxx-EL-POST
8	1	RFM-CC-SD-xxxx-E-LOCK BOX-V3
9	1	RFM-CC-SD-xxxx-BOTTOM TRACK
10	1	RFM-CC-SD-xxxx-STOP-V3
11	1	RFM-CC-SD-xxxx-VALANCE
14	1	RFM-CC-SD-xxxx-TRACK BRK
15	2	RFM-CC-SD-xxxx-J-6-48
16	5	5/16 Flat Washer
17	6	1/4-20 x 3/4 Round Comb. MS
19	11	1/4-20 Keps Nut
21	8	10-32 x 1/2 PAN QUAD MS
22	12	10-32 KEPS NUT
23	1	TRACK X 87
24	5	1/4-20 x 3/4 Carriage Bolt
25	1	Swing Handle Lock
26	2	230-139 Nylon Shoulder Washer
27	1	RFM-CC-SD- FILLER 12GA
28	1	RFM-CC-SD-FILLER 16GA
29	1	RFM-CC-SD-AlignBrkt
30	1	RFM-CC-SD-LOCK SLIDE-V3-LH_MIR
31	2	10-32 Nylock Nut
32	1	RFM-CC-SD-3890-POST1-RH-V3



**Door Frame Assembly:**

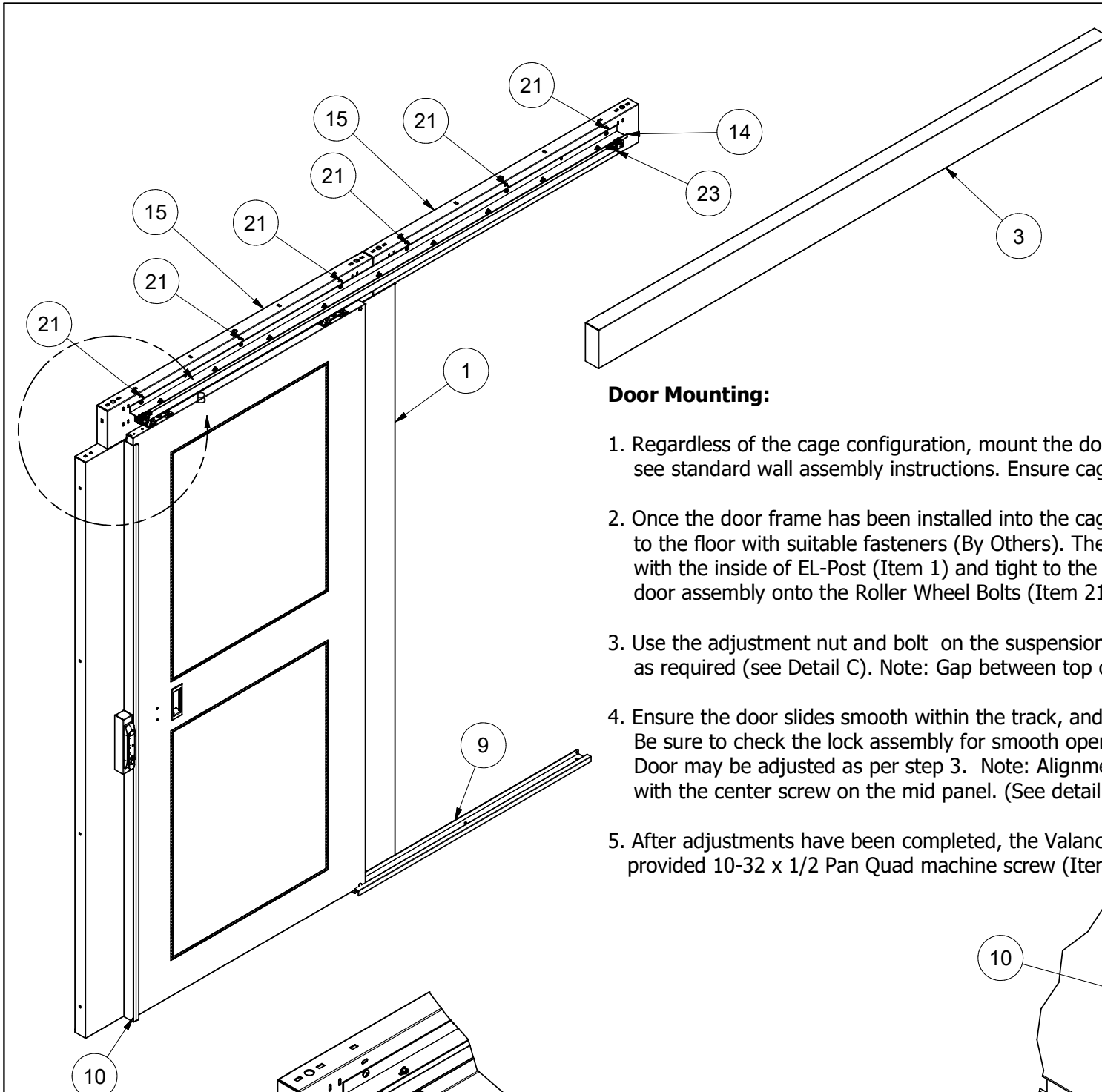
1. Attach the 2x Top joiners (Item 15) together using the 1/4-20 x 3/4" carriage bolts (Item 24) 1/4-20 keps nuts (Item 19) and 5/16" flat washer (Item 16). (Note: this stage can be done on the floor). Tighten using the 7/16" socket or wrench.
2. Attach the Track Bracket (Item 14) to the Track (Item 23) using the 10-32 x 1/2 Pan Quad machine screws (Item 21) and 10-32 Keps Nut (Item 22). Tighten using the #2 Robertson head screwdriver and 3/8" socket or wrench. Note: This may be factory assembled.
3. Fasten the Track subassembly from step 2 to the Valance sub-assembly from step 1 using the 1/4-20 x 3/4" round head machine screws (Item 17) and 1/4-20 keps nuts (Item 19). Tighten using the #3 Robertson head screwdriver and 7/16" socket or wrench. Refer to Detail A.
4. Fasten the Stop Bracket (Item 10) to the Post1 (Item 32) by using the supplied 10-32 keps nuts (Item 22) on the backside. Tighten using 3/8" socket or wrench.
5. Fasten the two posts (Item 1 and 32) to the top sub-assembly as shown per the orientation above using the supplied 1/4-20 x 3/4" carriage bolt (Item 24), 1/4-20 keps nut (Item 22), and 5/16" flat washer (Item 16). Tighten using the 7/16" socket or wrench.



DETAIL A  
SCALE 1 / 4

The information contained herewithin is proprietary and confidential to R.F.MOTE LTD. It may not be reproduced or further disseminated, in whole or in part, without prior written consent from R.F.MOTE LTD.

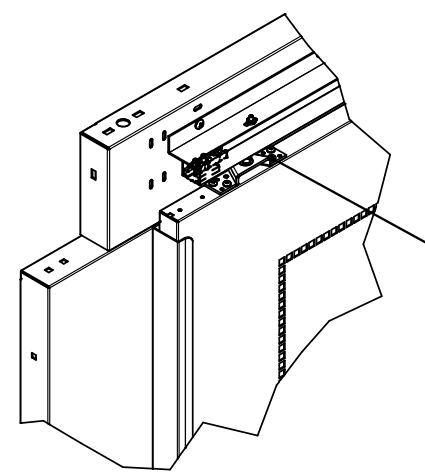
<b>R.F.MOTE LTD</b> ENGINEERED SYSTEMS		214 NEWKIRK RD. RICHMOND HILL, ONTARIO L4C 3G7 PHONE (905) 884-5250 FAX (905) 737-5188	
PROJECT			
PART NUMBER			
<b>RFM-CC-SD-3890-__-V3.IAM</b>			
DATE	SCALE	WEIGHT	REV
16-Apr-19	1 / 8	N/A	00
AUTHOR Voula		<b>SHEET 3 OF 6</b>	



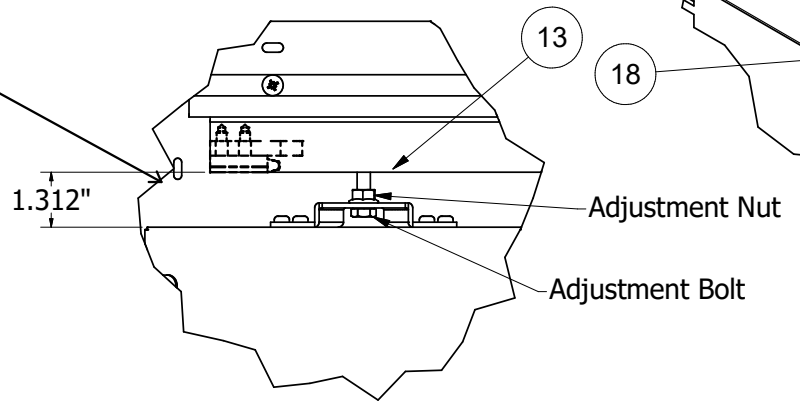
**Door Mounting:**

1. Regardless of the cage configuration, mount the door frame assembly into the cage wall, see standard wall assembly instructions. Ensure cage frame and wall are level and securely mounted.
2. Once the door frame has been installed into the cage assembly, secure the Bottom Track (Item 14) to the floor with suitable fasteners (By Others). The Bottom Track (Item 14) should be installed flush with the inside of EL-Post (Item 1) and tight to the front face of the columns. At this point, place the door assembly onto the Roller Wheel Bolts (Item 21) on the end as shown on Detail D.
3. Use the adjustment nut and bolt on the suspension wheels to adjust the height and to level the door as required (see Detail C). Note: Gap between top of door and bottom of track is nominal 1-5/16".
4. Ensure the door slides smooth within the track, and is flush and level with the door stop. Be sure to check the lock assembly for smooth operation. (See separate instruction) Door may be adjusted as per step 3. Note: Alignment marks are provided on the door stop that line up with the center screw on the mid panel. (See detail E)
5. After adjustments have been completed, the Valance Panel (Item 11) can be installed with the provided 10-32 x 1/2 Pan Quad machine screw (Item 26).

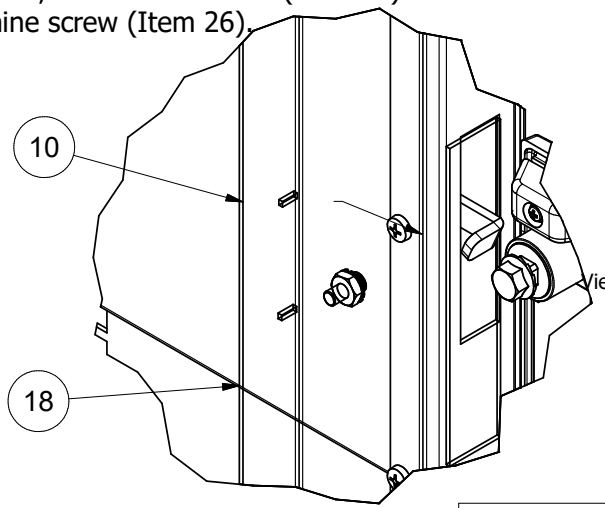
PARTS LIST		
ITEM	QTY	PART NUMBER
1	1	RFM-CC-SD-xxxx-EL-POST
9	1	RFM-CC-SD-xxxx-BOTTOM TRACK
10	1	RFM-CC-SD-xxxx-STOP-V3
11	1	RFM-CC-SD-xxxx-VALANCE
13	2	940-82-108 Roller Wheels
14	1	RFM-CC-SD-xxxx-TRACK BRK
15	2	RFM-CC-SD-xxxx-J-6-48
21	8	10-32 x 1/2 PAN QUAD MS
23	1	TRACK X 87
26	2	230-139 Nylon Shoulder Washer
27	1	RFM-CC-SD- FILLER 12GA
28	1	RFM-CC-SD-FILLER 16GA
29	1	RFM-CC-SD-AlignBrkt
30	1	RFM-CC-SD-LOCK SLIDE-V3-LH_MIR
31	2	10-32 Nylock Nut
32	1	RFM-CC-SD-3890-POST1-RH-V3



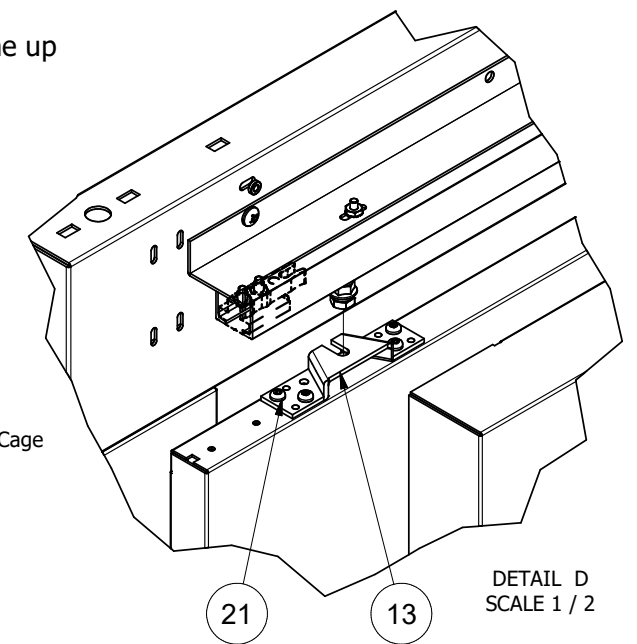
DETAIL B  
SCALE 1 / 4



DETAIL C  
SCALE 1 / 2



DETAIL E  
SCALE 1 / 1  
View from inside of Cage



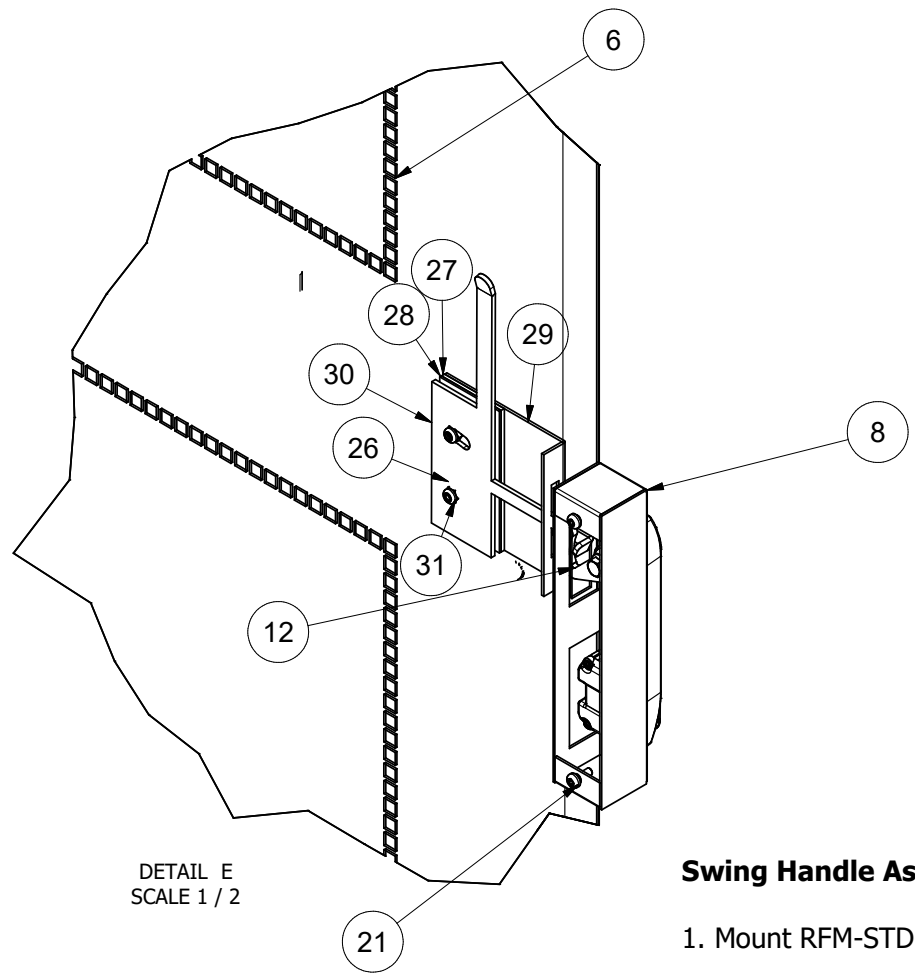
DETAIL D  
SCALE 1 / 2

**R.F.MOTE LTD**  
ENGINEERED SYSTEMS

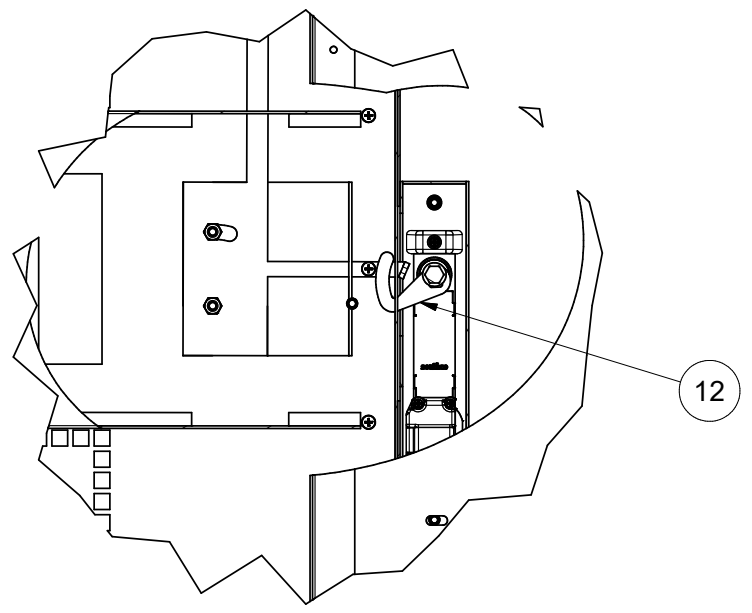
214 NEWKIRK RD.  
RICHMOND HILL, ONTARIO  
L4C 3G7  
PHONE (905) 884-5250  
FAX (905) 737-5188

PROJECT			
PART NUMBER			
<b>RFM-CC-SD-3890-_-V3.IAM</b>			
DATE	SCALE	WEIGHT	REV
16-Apr-19	1 / 8	N/A	00
AUTHOR		<b>SHEET 4 OF 6</b>	
Voula			

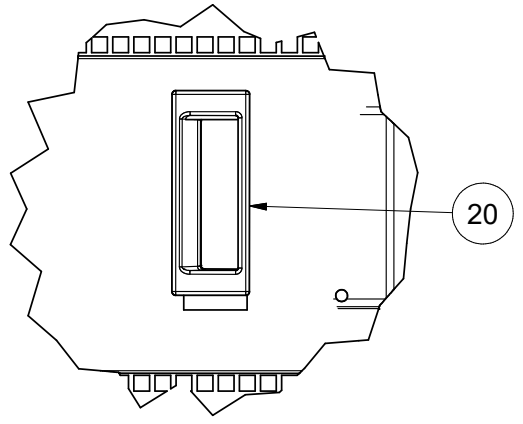
The information contained herewithin is proprietary and confidential to R.F.MOTE LTD. It may not be reproduced or further disseminated, in whole or in part, without prior written consent from R.F.MOTE LTD.



DETAIL E  
SCALE 1 / 2



DETAIL F  
SCALE 1 / 2



DETAIL G  
SCALE 1 / 2

**Swing Handle Assembly:**

1. Mount RFM-STD-Swing Handle Lock (Item 6) into RFM-CC-SD-E-Lock Box V3(Item 2).
2. Install Hooked Cam (Item 4) onto swing Handle.  
Ensure that the open end of the cam is mounted to the top. See Detail F.
3. Mount E-Lock Box assembly to RFM-CC-SD-3890-Post 1 (Item 13) with provided 10-32 x 1/2 Machine Screw(Item 5)
4. Place RFM-CC-SD-AlignBrkt (Item 10) over studs on door, then place RFM-CC-SD-Fillers (Items 8 & 9) on the studs, Next insert Nylon Shoulder Washers (Item 7) into both sides of RFM-CC-SD-Lock Slide-V3 (Item 11) and place onto studs. Using the provided 10-32 Nylock Nuts (Item 31) tighten with 3/8" wrench ensuring free side to side movement of the lock slide.

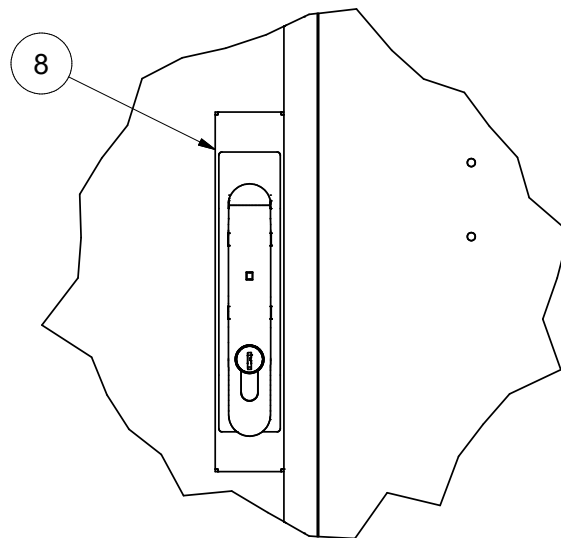
PARTS LIST		
ITEM	QTY	PART NUMBER
2	1	RFM-CC-SD-xxxx-xx-V3-DOOR
8	1	RFM-CC-SD-xxxx-E-LOCK BOX-V3
12	1	E5-6200 Hooked Cam
20	2	P1-30-101-11 Pull Handle
21	8	10-32 x 1/2 PAN QUAD MS
25	1	Swing Handle Lock
26	2	230-139 Nylon Shoulder Washer
27	1	RFM-CC-SD- FILLER 12GA
28	1	RFM-CC-SD-FILLER 16GA
29	1	RFM-CC-SD-AlignBrkt
30	1	RFM-CC-SD-LOCK SLIDE-V3-LH_MIR
31	2	10-32 Nylock Nut
32	1	RFM-CC-SD-3890-POST1-RH-V3

**R.F.MOTE LTD**  
ENGINEERED SYSTEMS

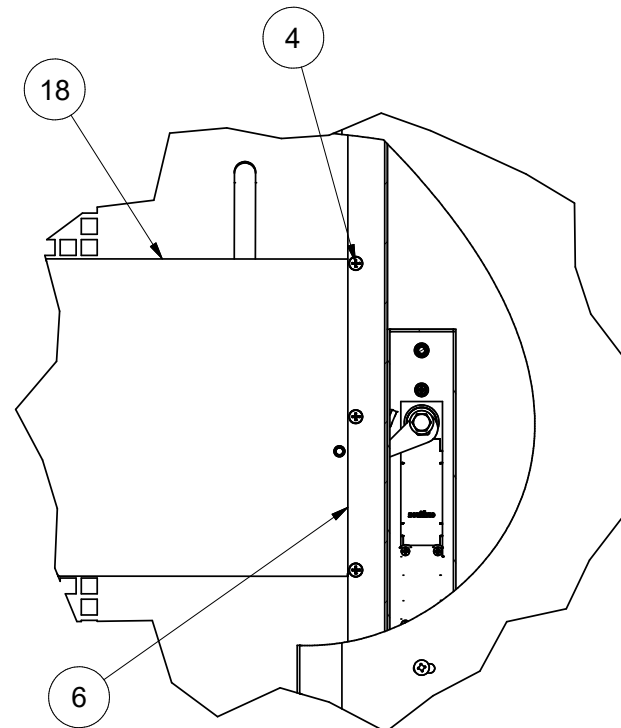
214 NEWKIRK RD.  
RICHMOND HILL, ONTARIO  
L4C 3G7  
PHONE (905) 884-5250  
FAX (905) 737-5188

PROJECT			
PART NUMBER			
<b>RFM-CC-SD-3890-__-V3.IAM</b>			
DATE	SCALE	WEIGHT	REV
16-Apr-19	1 / 8	N/A	00
AUTHOR		<b>SHEET 5 OF 6</b>	
Voula			

The information contained herewithin is proprietary and confidential to **R.F.MOTE LTD.** It may not be reproduced or further disseminated, in whole or in part, without prior written consent from **R.F.MOTE LTD.**



DETAIL H  
SCALE 1 / 2

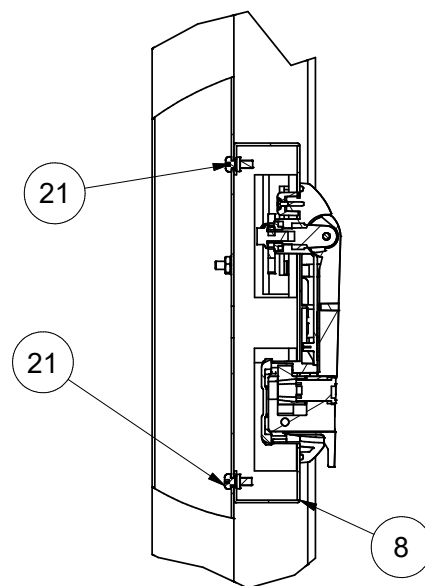


DETAIL I  
SCALE 1 / 2

PARTS LIST		
ITEM	QTY	PART NUMBER
8	1	RFM-CC-SD-xxxx-E-LOCK BOX-V3
18	1	RFM-CC-SD-xxxx-WIRE COVER-EL-V3
21	8	10-32 x 1/2 PAN QUAD MS
25	1	Swing Handle Lock
26	2	230-139 Nylon Shoulder Washer
27	1	RFM-CC-SD- FILLER 12GA
28	1	RFM-CC-SD-FILLER 16GA
29	1	RFM-CC-SD-AlignBrkt
30	1	RFM-CC-SD-LOCK SLIDE-V3-LH_MIR
31	2	10-32 Nylock Nut
32	1	RFM-CC-SD-3890-POST1-RH-V3

**E-Lock Assembly:**

1. Assemble Swing Handle Lock (Item 5) onto RFM-E Lock Box(Item 3). Then mount onto post (Item 2) with 10-32 x 1/2 Pan Quad screw, see Detail I
2. Mount the assembly to the POST1 (Item 2) with 10-32 x 1/2 machine screw (Item 4), see Detail H.
3. Door may be adjusted as per instructions on sheet 4 to ensure smooth operation of both the lock and the door.
5. WIRE-COVER-EL (Item 1) may now be installed with 10-32 x 1/2 machine screw (Item 4), see Detail I.



DETAIL J  
SCALE 1 / 2

The information contained herewithin is proprietary and confidential to **R.F.MOTE LTD.**. It may not be reproduced or further disseminated, in whole or in part, without prior written consent from **R.F.MOTE LTD.**

<b>R.F.MOTE LTD</b> ENGINEERED SYSTEMS		214 NEWKIRK RD. RICHMOND HILL, ONTARIO L4C 3G7 PHONE (905) 884-5250 FAX (905) 737-5188	
PROJECT			
PART NUMBER <b>RFM-CC-SD-3890-__-V3.IAM</b>			
DATE <b>16-Apr-19</b>	SCALE <b>1 / 8</b>	WEIGHT <b>N/A</b>	REV <b>00</b>
AUTHOR <b>Voula</b>		<b>SHEET 6 OF 6</b>	